 **Using and Comparing Data Representations**
Explore

Directions: Complete each graph using the table given.

Table 1: **Complete the Dot Plot.**

Typing Test

Words per Minute	Number of Students
10	2
20	3
30	5
40	4
50	5
60	5

Typing Test

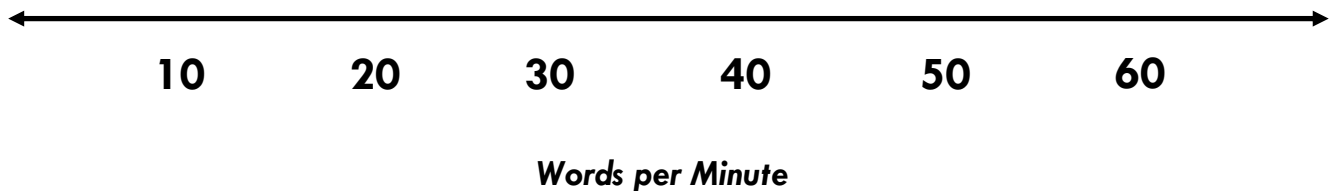


Table 2: Complete the Stem and Leaf Plot

Minutes Spent on Homework

24	25	34	39	34	45	42	37	41	35
----	----	----	----	----	----	----	----	----	----

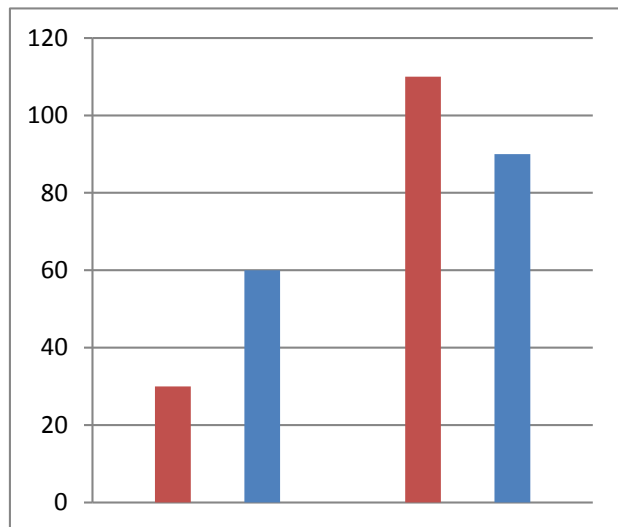
Minutes Spent on Homework

STEM	LEAF

Table 3: Complete the bar graph

Student Population

Grade	Number of Students	
	Turner Elementary School	Miles Elementary School
2	60	30
3	60	60
4	100	110
5	90	70



Debriefing Questions:

1. How are a dot plot and a frequency table alike?
2. What does a stem and leaf plot tell you about the distribution, or spread, of a data set?

